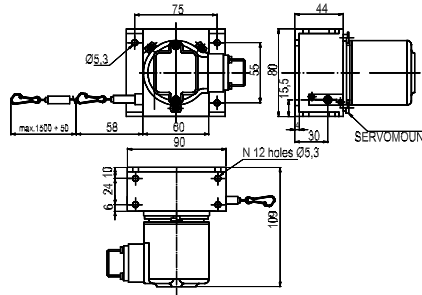


- Incremental encoders
- Absolute encoders
- Linear transducers
- Helical couplings



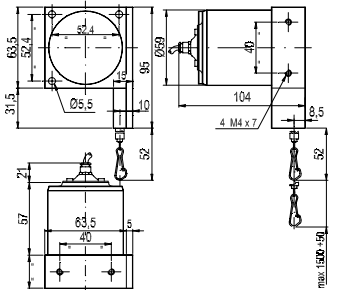
“CABLE” LINEAR TRANSDUCERS

TF150



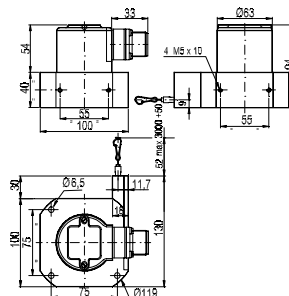
Weight: about 600 g.
Protection: IP64
Axial connections: connector or cable
Radial connections: connector or cable
Electronics: -, K,B,N,C,P,Q,R
Power supply: 5V,8 ÷ 24V,18 ÷ 28V
Max freq.: 100 KHz
Max pulses/rev: 0.1 mm
Useful stroke: 1500 mm

TFK150



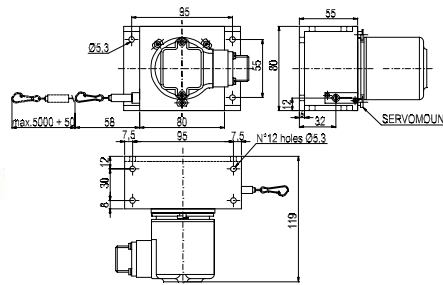
Weight: about 750 g.
Max rad./ax. load: 12 kg
Protection: IP64
Axial connections: connector or cable
Radial connections: connector or cable
Electronics: -, K,B,N,C,P,Q,R
Power supply: 5V,8 ÷ 24V,18 ÷ 28V
Max freq.: 100 KHz
Max resolution: 0.1 mm
Useful stroke: 1500 mm

TFK300



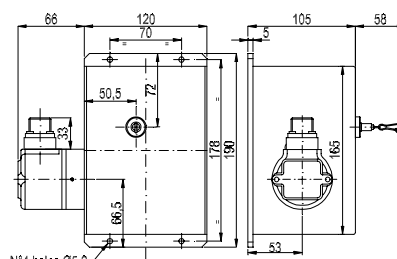
Weight: about 1050 g.
Protection: IP64
Axial connections: connector or cable
Radial connections: connector or cable
Electronics: -,K,B,C,N,H,P,Q,R
Power supply: 5V,8 ÷ 24V,18 ÷ 28V
Max freq.: 100 KHz
Max resolution: 0.1 mm
Useful stroke: 3000 mm

TF500



Weight: about 850 g.
Protection: IP64
Axial connections: connector or cable
Radial connections: connector or cable
Electronics: -, K,B,N,C,P,Q,R
Power supply: 5V,8 ÷ 24V,18 ÷ 28V
Max freq.: 100 KHz
Max resolution: 0.1 mm
Useful stroke: 5000 mm

TF15M



Weight: about 2600 g.
Max rad./ax. load: 12 kg
Protection: IP64
Axial connections: connector or cable
Radial connections: connector or cable
Electronics: -, K,B,N,C,P,Q,R
Power supply: 5V,8 ÷ 24V,18 ÷ 28V
Max freq.: 100 KHz
Max resolution: 0.1 mm
Useful stroke: 15000 mm

TECHNICAL SPECIFICATIONS

MODEL		TF150	TFK150	TFK300	TF500	TF15M
WEIGHT	g	600	750	1050	850	2600
STANDARD STROKE	mm	1500	1500	3000	5000	15000
ENCODER PROTECTION DEGREE	IP	64				
MAX READING SPEED	m/s	10				
MAX ACCELERATION	G	5				
SHOCK RESISTANCE	G	50 (11 msec)				
VIBRATION RESISTANCE	G	12 (10-2000 Hz)				
ACCURACY	mm	+/-0,1				
MAX PULLOUT CABLE FORCE	N	6,4	6.4	6.4	7,1	8.2
MAX PULLIN CABLE FORCE	N	3,1	3.1	3.1	3,2	4.2
DETECTORS		FOTOTRANSISTORS				
LIGHT SOURCE		LED				
OPERATING TEMPERATURE	°C	0 ÷ 70				
STORAGE TEMPERATURE	°C	-20 ÷ +85				
MAX FREQUENCY	KHz	100				
POWER SUPPLY	V	5±5%,8÷15,8÷24,18÷28				
CONSUMPTION	mA	- 120, - 180 LINE DRIVER				
RESOLUTION	mm	0,1 mm-1 mm (external multiplication by 1, by 2, by 4)				

ORDERING CODE

OPTIONS	MODEL	POWER SUPPLY	VERSION	ELECTRONICS	RESOLUTION	MULTIPL.	CONNECTION	OUTPUT
X	TF500	824	B	B	100	4	CV	R
L LOW TEMPERATURE Y UNBREAK. DISK Z SEALED BALL BEAR. X CUSTOM OPTIONS C LOW CONSUMPTION J ZERO LOGIC COMB. M IMPREGNATE ELECTR A HIGH TEMPERATURE G TROPICALIZATION	5 5V ± 5% 824 8 ÷ 24V 1828 18 ÷ 28V 815 8 ÷ 15V** 12 12V ± 5% 24 24V ± 5% 1230 12 ÷ 30V output 12V 8245 8 ÷ 24V output 5V 1030 10 ÷ 30V	M MONODIRECTIONAL B BIDIRECTIONAL BZ BIDIRECTIONAL +ZERO MZ MONODIRECTIONAL +ZERO X CUSTOM OPTIONS	- STANDARD NPN 10 mA K OPEN COLLECTOR NPN 10 mA C DRIVER 88C30 N DRIVER 26LS31 D DISCRIM. T INTEGRAT. 7404 L 2x PUSH-PULL WITH PROT. H PUSH-PULL WITHOUT PROT. B PUSH-PULL WITH PROT. Q NPN 70 mA WITH PROT. R NPN 70 mA WITHOUT PROT. M 2x PUSH-PULL WITHOUT PROT. P PNP 70 mA WITH PROT. U PNP 70mA WITHOUT PROT. X CUSTOM OPTIONS	100 = 0.1mm 1000 = 1 mm	1 x1 2 x2 4 x4	CV - Cable CD - DE9P connector CM - MS3102A16S-1P connector CL - MS3102A18S-1P connector CI - UTG014-12P connector CH - Eml 12 connector SM -CM sealed connector SL -CL sealed connector VM - MS3102A16S connector at end cable VL - MS3102A18 connector at end cable VD - DE9P connector at end cable VI - UTG06-12P connector at end cable VK -MS3102A20 connector at end cable VH -Pml121 connector at end cable VN -RLK121MRV connector at end cable VS -840-31-570 connector at end cable TM -CM sealed connector at end cable		